



# HUGH MACKAY

---

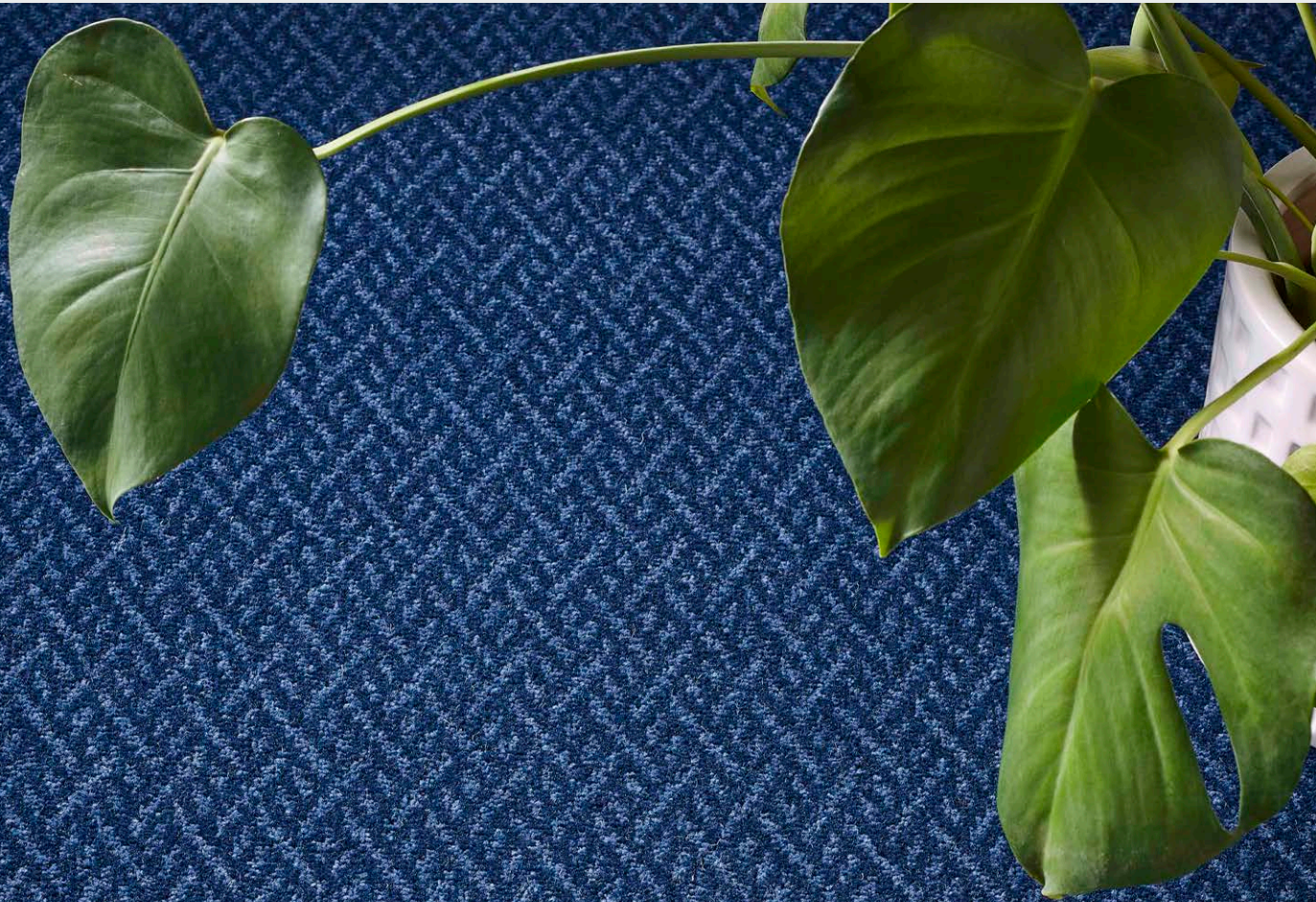
carpets

Quality Carpets Since 1903



# Durham Edition

Made from 80% Wool



  
**HUGH MACKAY**  
carpets



# Durham Edition

Choose from 12 designs



Ivory



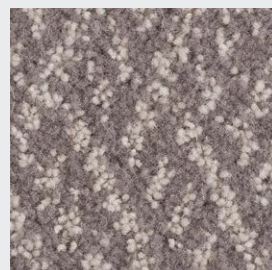
Camel



Maize



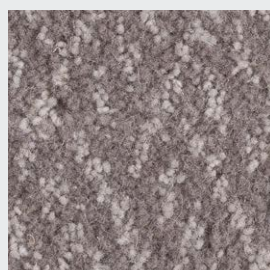
Silver



Pumice



Platinum



French Grey



Rockface



Black



Marine



Green



Dark Red

Hugh Mackay Carpets  
Part of The Mackay Group  
T: 01429 892555  
E: [sales@hughmackay.co.uk](mailto:sales@hughmackay.co.uk)  
W: [www.hughmackay.co.uk](http://www.hughmackay.co.uk)

  
**HUGH MACKAY**  
carpets

# Durham Edition

## Specification Details

Specification	
Pile Content:	80% Wool 20% Nylon
Construction:	Tufted. 1/8 <sup>th</sup> Gauge
Backing:	Polybac
Width:	4m
Pile Weight:	1200gr/m2
Pile Height:	7.5mm
Origin:	EU
Insect Resistant:	Yes
Tog:	1.3

Tested for	
<u>Suitability</u>	
Medium contract	(in accordance with BS7131:part1:1989)
Heavy Residential	
<u>Flammability</u>	
BS/ISO 6925 Methanamine Pill	Pass
BS4790 (Hot Metal Nut)	Low radius of Char
BS2597 radius of effects of ignition	(BS4790 BS5287)
<u>Castor Chair</u>	
Not recommended unless protecting mat is present	
<u>Suitability for Stairs</u>	
Yes in domestic situation	(in accordance with BS EN1307)
(use stair nosings in contract situations)	
<u>Static Propensity</u> _____	Low propensity to static
down 40%	RH

Features
Available in sheet.
Made in Europe. Regular Nationwide delivery service
Fashionable colours to meet a wide variety of interior styles. Ease of maintenance. All colours available from stock for immediate call off.

General Information
<b>Pile reversal:</b> All cut pile carpets can suffer from pile reversal and in certain instances this may become permanently bent or distorted for no specific reason that research has yet identified, giving areas of light and shade. This is also known as "shading" or "watermarking". It is not a defect in manufacture, it only occurs in a small percentage of all carpets and no liability whatsoever can be accepted by the manufacturer in respect of it.
<b>Pile pressure:</b> All cut pile carpets are liable to show light and dark patches resulting from disturbance of the pile created by foot traffic or brushing, This is a normal feature and is not a defect in manufacture and no liability whatsoever can be accepted by the manufacturer in respect of it.
<b>Pale shades:</b> We include within our collection a number of pale shades. Primarily these are used as top or highlight colours. These more delicate shades will invariably tend to soil more quickly and give a lower of light fastness than the norm, and may show natural blemishes within the fibre that tend to be masked in deeper shades containing a greater quantity of dyestuff.

Maintenance
Hugh Mackay recommend that this carpet is maintained in accordance with an agreed maintenance schedule which should include the following:
i). Vacuum regularly.
ii). Remove spills immediately.
iii). Professionally clean as required.

Installation
To be installed in accordance with BS5325 "Code of Practice for the Installation of Floor Coverings" and NICF manual.
Pattern match cannot be guaranteed with any tufted patterned carpet.
For quantity orders requiring colour matching, please state at the time of ordering.
All samples may not be from the same production batch as current stock and therefore should be used as a guide and not as an exact match.
Colour variations: There may be colour variations/shade variations between each batch of carpet as well as with undyed materials.
Undyed Wool: Due to the inherent natural variations in undyed wool and the current blending techniques, there may be noticeable shade variations between the colours used in the same material and the actual production.

Hugh Mackay Carpets  
 Part of The Mackay Group  
 T: 01429 892555  
 E: sales@hughmackay.co.uk  
 W: www.hughmackay.co.uk

  
**HUGH MACKAY**  
 carpets